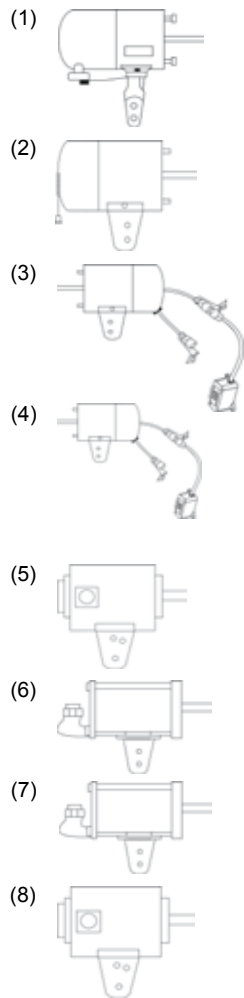


Heavy-Duty Air Circulators

Component Parts / Accessories for Assembled Fan Heads

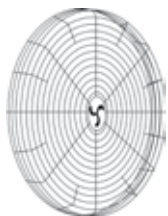
Motors



EDP No.	Catalog No.	F.L. Amps	Ship Wt.	Description
21021	967J	1.65	24	Single-phase, 3 Speed, 115 V, 1/5 HP, ball bearing, oscillating, 5/8" shaft (use only on standard 18" and 20" oscillating fans). Use BA-1A Propeller NOTE: Oscillating Motor NOT to be used UPSIDE-DOWN position (1)
21007	967-3 SP	2.7	23	Single-phase, 3 Speed, 115 V, 1/3 HP, ball bearing, oscillating, 5/8" shaft *use only on standard 24" and 30" oscillating fans). Use BA-1A Propeller NOTE: Oscillating Motor NOT to be used UPSIDE-DOWN position (1)
21777	Gear Box		18	Assembly 967J and 967-3SP
03915	End Dome			Assembly 967J and 967-3SP (with capacitor)
21022	642J	1.65	19	Single-phase, 3 Speed, 115 volt, 1/5 HP, ball bearing, non-oscillating, 5/8" shaft (use only on standard 18" and 20" non-oscillating fans). Use BA-1A Propeller (2)
21017	642-AC 3 SP	2.8	19	Single-phase, 3 Speed, 115 volt, 1/3 HP, ball bearing, non-oscillating, 5/8" shaft (use only on standard 24" and 30" non-oscillating fans). Use BA-1A Propeller (2)
06004	End Dome		2	Assembly for 642-AC-3SP (with capacitor)
21090	642-AC2SDC		19	Single phase, 2 Speed, 115 volt, 1/3 HP, ball bearing, non-oscillating motor with 2-speed drop cord switch. Use with BA-1A propeller (3)
12013	2-SPDCS-HD		2	Modular end dome with drop cord and 2 speed switch. For 642 Motor Only (4)
21025	1069 B	1.2 / 0.6	16	Three-phase, 1 Speed, 208 / 230 / 260V, 1/4 HP, ball bearing, non-oscillating fans only. Use BA-1A Propeller (5)
21035	1169 E	6.9 / 3.5	48	Single-phase, single-speed, 115/230V, 1/4 HP, ball bearing for Class I Group D and Class II, Groups E, F & G. (Use only on explosion-proof, non-oscillating fans with BA-1A Propeller) (6)
21040	1269	1.1 / 0.55	33	Three-speed, single-speed, 230/460V, 1/4 HP, ball bearing (use only on non-oscillating, explosion-proof fans) Use BA-1A Propeller (7)
21050	1369	4.5 / 2.0	36	1 HP, three-phase, single-speed 230/460 volt, ball bearing, totally enclosed (use only on high-velocity spot coolers). Use HH-1 Propeller (8)

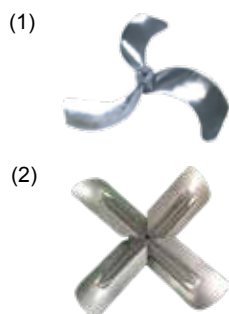
NOTES: Explosion Proof and 3 Phase air circulator motors are not supplied with switches or power cords. Must be hard wired. See page 3 for further Explosion Proof Motor information.

Guards



EDP No.	Catalog No.	Ship Wt.	Description
71000	C-1820G	11	18" / 20" guard. Nickel chrome plated. (use on all 18" and 20" oscillating & non-oscillating fans)
21070	AC24-G	14	24" guard. Nickel chrome plated (use on all 24" oscillating & non-oscillating fans)
21080	AC30-G	20	30" guard (use on all 30" oscillating & non-oscillating fans)

Propellers



EDP No.	Catalog No.	Ship Wt.	Description
21101	18BA-1	4	18" Propeller - 5/8" bore. Cast Aluminum (1)
21102	20BA-1	5	20" Propeller - 5/8" bore. Cast Aluminum (1)
21095	24BA-1A	5	24" Propeller - 5/8" bore. Cast Aluminum (1)
21105	30BA-1A	6	30" Propeller - 5/8" bore. Cast Aluminum (1)
21120	24HH-1	8	24" Propeller, 5/8" bore (use only on 24" high velocity spot coolers) Galvanized (2)
21130	30HH-1	9	30" Propeller, 5/8" bore (use only on 30" high velocity spot coolers) Galvanized (2)

Heavy-Duty Air Circulators

Component Parts / Accessories for Assembled Fan Heads



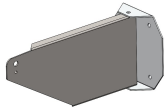
Adjustable Pedestal

EDP No.	Catalog No.	Ship Wt.	Description
21152	8CP2B	13	5' to 8' pedestal (fits all Heavy Duty fans)



Floor Base

EDP No.	Catalog No.	Ship Wt.	Description
21153	I-2030B	24	For use with all pedestal air circulators



Wall Bracket

Brackets

EDP No.	Catalog No.	Bracket Type	Ship Wt.	Description
37772	IAC-WB	Wall	7	For use with oscillating and non-oscillating motors. Includes Safety Cable Kit.
21191	700-U	I-Beam	14	Use for HD air circulator I-Beam mountings, Includes Safety Cable Kit
21203	CK-2	Vertical	5	Use for HD air circulator vertical mount (non-oscillating only) Includes Safety Cable Kit. Extension Cord and Extension Pole Not Included.



I-Beam Bracket



Vertical Bracket

Accessories

EDP No.	Catalog No.	Ship Wt.	Description
21204	Safety Kit	1	12' of 1/16" diameter cable, two clamp and instructions. This safety cable kit is available for retrofit applications.
12002	DJ-EC-6	1	6' extension cord - for use with 642-AC2SDP Drop Cord Motor - Yellow
12008	DJ-EC-9	2	9' extension cord - for use with 642-AC2SDP Drop Cord Motor - Yellow
12009	DJ-EC-12	2	12' extension cord - for use with 642-AC2SDP Drop Cord Motor - Yellow
70601	AMFW30K	7	Snap on wheel kit with set screw lock for use on all floor model air circulators except I-2030 base. No tools required
01633	Cord	2	15' Supply Cord Replacement
01723	Switch	2	2 Speed / 3 Speed Pull Chain Switch



Safety Kit



Extension Cord



Wheel Kit

