

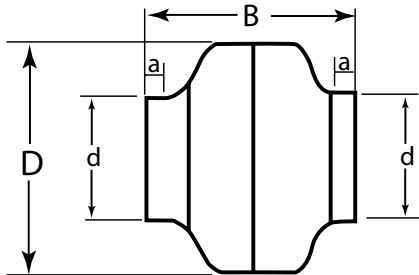
AIF In-Line Centrifugal Duct Fans

AIF Model



5 Year Warranty Features

- Heavy Gauge, Drawn Steel Housing with Baked Epoxy Finish
- Precision Balanced for Vibration-Free Operation
- Automatic Reset Thermal Overload Protection
- Exceptionally Quiet and Efficient BC Impeller
- 120V Operation, Other Voltages Available
- Size 4" to 12", 147 CFM to 1,970 CFM
- Speed Controllable



Features	Benefits
External Rotor Motor	Compact Design
Backward Curve Wheel	High Efficiency Non-Overloading
Dynamically Balanced Wheel	Low Noise and Vibration
Die Cast Aluminum Motor Body	Excellent Heat Dissipation, 100% Speed Controllable, Long Motor Life
Permanent Lube Ball Bearings	Maintenance Free / Smooth Operation
NEMA Class B Motor Insulation	Industrial Quality Construction
Thermal Overload Motor Protection	Safety Feature

EDP No.	Catalog No.	Watts	RPM	Capacity (CFM) at "S.P.									Dimensions (in.)				Ship Wt.
				0	0.2	0.4	0.6	0.8	1.0	1.2	1.5	2.0	D	d	a	B	
23202	AIF100A ES	43.5	2580	147	130	107	82	57	34	11	---	---	9.5	3.9	1.0	8.3	7.5
23190	AIF100B	83.4	2620	150	140	127	112	94	74	53	23	---	9.5	3.9	1.0	8.3	8.0
23195*	AIF100B-C	83.4	2520	150	140	127	112	94	---	74	53	23	9.5	3.9	1.0	8.3	8.0
23203	AIF125A ES	44.4	2520	179	150	121	87	49	14	---	---	---	9.5	4.8	1.0	8.3	7.5
23191	AIF125B	85.4	2750	183	160	141	122	101	77	51	14	---	9.5	4.8	1.0	8.3	7.5
23196*	AIF125B-C	85.4	2750	183	160	141	122	101	77	51	14	---	9.5	4.8	1.0	8.3	7.5
23204	AIF150A ES	46.8	2390	235	190	148	97	44	---	---	---	---	9.5	5.8	1.0	8.3	7.5
23192	AIF150B ES	89.2	2450	308	260	216	175	139	108	81	47	---	13.2	5.8	1.0	9.1	12.5
23197*	AIF150B-C ES	89.2	2450	308	260	216	175	139	108	81	47	---	13.2	5.8	1.0	9.1	12.5
23205	AIF200A ES	84.5	2500	368	300	234	184	149	114	70	---	---	13.2	7.8	1.0	9.1	12.0
23193	AIF200B ES	188	2550	579	520	453	387	329	282	245	206	154	13.2	7.8	1.0	9.1	15.0
23198*	AIF200B-C ES	188	2550	579	520	453	387	329	282	245	206	154	13.2	7.8	1.0	9.1	15.0
23206	AIF250 ES	197	2470	616	550	488	431	379	330	286	227	143	13.2	9.8	1.0	9.1	15.0
23212*	AIF250-C ES	197	2470	616	550	488	431	379	330	286	227	143	13.2	9.8	1.0	9.1	15.0
23207	AIF300A ES	206	2450	780	700	595	420	330	290	255	210	132	15.9	11.8	1.2	11.8	18.0
23194	AIF300B ES	312	2780	970	910	803	680	559	453	367	273	164	15.9	11.8	1.2	11.8	18.0
23199*	AIF300B-C ES	312	2780	970	910	803	680	559	453	367	273	164	15.9	11.8	1.2	11.8	18.0

* - Comes with cord

AIF In-Line Centrifugal Duct Fans

AIF Model

Accessories

EDP No.	Catalog No.	Description	Ship Weight
23201	PS-DB	Pressure Sensing Switch Kit	1.5
24855	485210	Variable Speed Control, 1 Phase, 5 Amp Speed Control	1
23163	DF-4	4" Diffuser Vent	1
23177	DF-5	5" Diffuser Vent	1
23164	DF-6	6" Diffuser Vent	1
23170	DF-8	8" Diffuser Vent	1.4
23180	DF-10	10" Diffuser Vent	1.8
23165	BD-4	4" Backdraft Damper	1
23166	BD-6	6" Backdraft Damper	1
23171	BD-8	8" Backdraft Damper	1.2
23172	BD-10	10" Backdraft Damper	1.4
23178	BD-12	12" Backdraft Damper	1.6



Pressure Switch



Speed Control



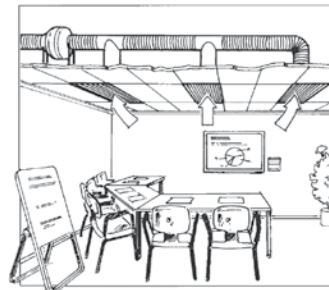
Diffuser Vent



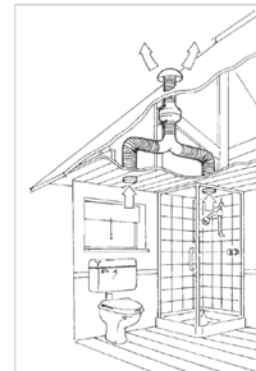
Backdraft Damper

Typical Applications

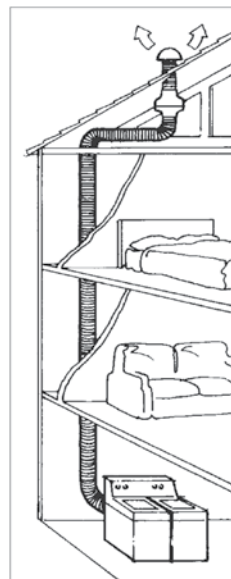
	Residential	Commercial	Industrial
Bathroom Exhaust	✓	✓	✓
Locker Room Exhaust		✓	✓
Kitchen Exhaust (not over range hood)	✓		
Clothes Dryer Exhaust	✓	✓	✓
Primary Exhaust Fan	✓	✓	✓
Duct Booster	✓	✓	✓
Warm Air Transfer	✓	✓	✓
General Ventilation	✓	✓	
Conference Room Exhaust		✓	✓
Smoke Areas	✓	✓	
Cafeteria Exhaust		✓	✓
Humidity & Moisture Removal	✓	✓	✓
Equipment Cooling		✓	✓
Make Up Air	✓	✓	✓
Welding Fume Removal			✓
Spot Ventilation	✓	✓	✓
Booster Fan	✓	✓	✓



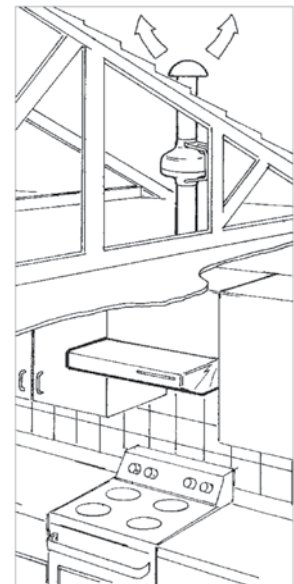
Conference room exhaust ventilation



Multi-ventilating points with one In-Line Fan



(In-Line) Fan assisted dryer exhaust



(In-Line) Fan rangehood exhaust



(AIF Fan) transferring conditioned air to a new room addition

